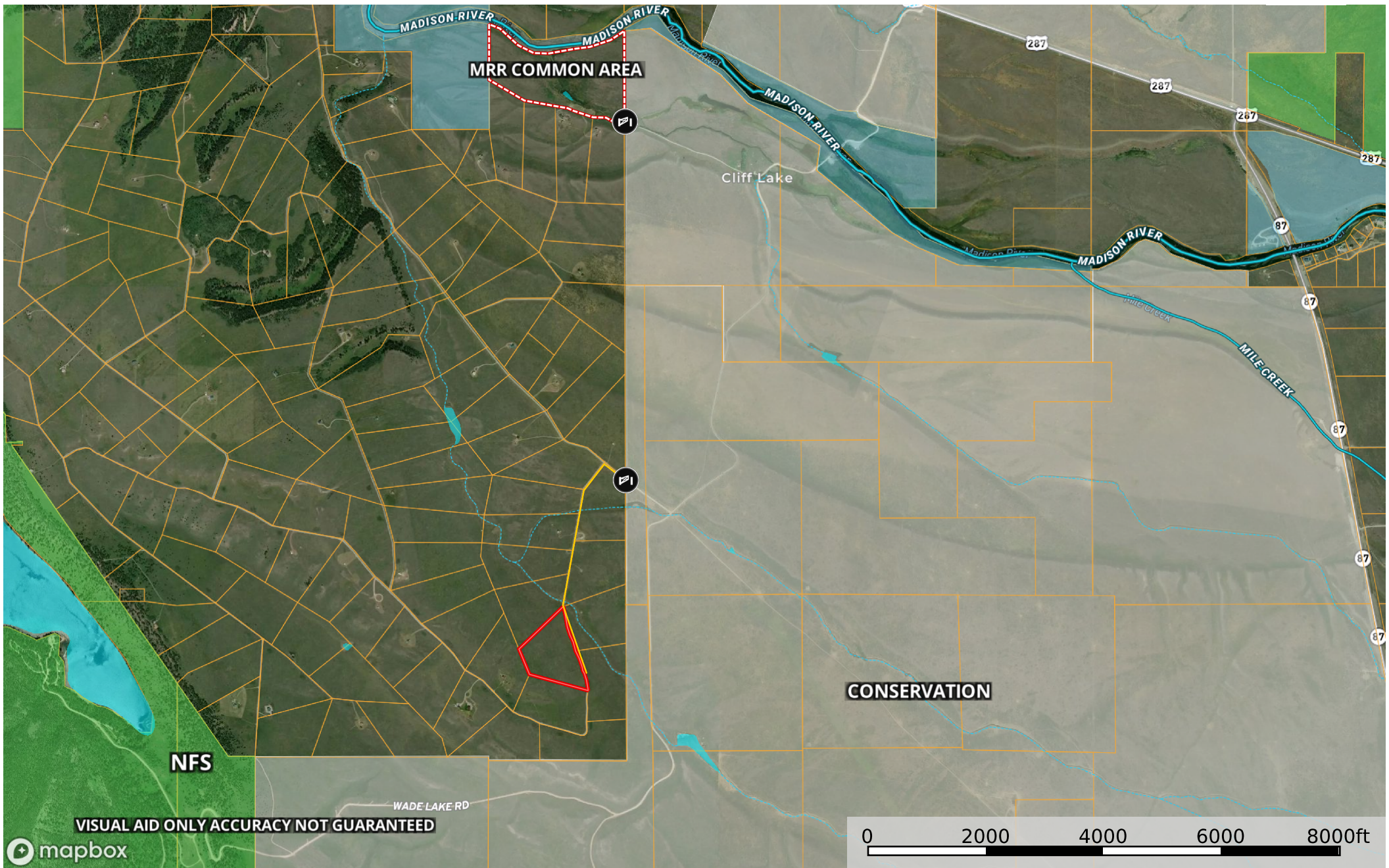


70 Flatiron Trail - MRR  
Madison County, Montana, 20 AC +/-



- MRR Gate
- Common Area Gate
- from gate
- Boundary
- Boundary
- Conservation Easements
- Forest Service
- State Land
- Fish and Wildlife
- National Park
- Other
- BLM
- Local Government
- Stream, Intermittent
- River/Creek
- Water Body